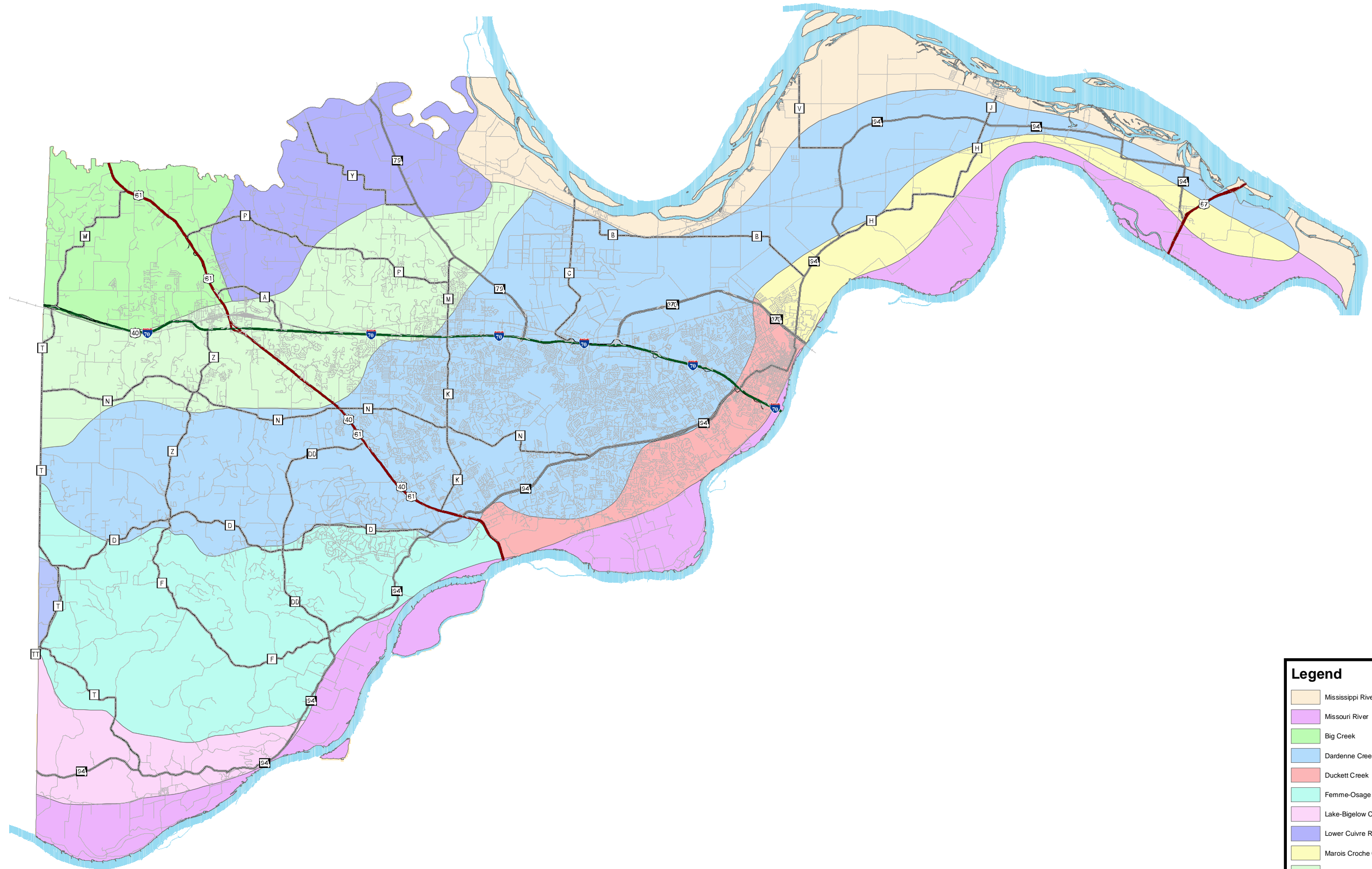


St. Charles County, Missouri

St. Charles County Government, 201 North Second Street, St. Charles Missouri, 63301



Legend

- Mississippi River
- Missouri River
- Big Creek
- Dardenne Creek
- Duckett Creek
- Femme-Osage Creek
- Lake-Bigelow Creeks
- Lower Cuivre River
- Marois Croche Creek
- Peruque Creek
- Togue Creek

N
Scale 1" = 3 miles
03/03/2004

Major Watersheds



Disclaimer of Warranty

St. Charles County Government makes no representations about the suitability of these data for any purpose. The data are provided "as is" without express or implied warranties, including warranties of merchantability and fitness for a particular purpose or use.

The user relieves St. Charles County Government and its respective officers, agents and employees of any liability for any and all damages resulting from use or misuse of these data including, but not limited to, incidental, consequential, special or indirect damages of any sort, whether arising in tort, contract or otherwise.

St. Charles County Government has been informed of the possibility of such damages, or for any claim by any other party. Furthermore, in States that do not allow the exclusion or limitation of incidental or consequential damages, you may not use these data.

Go to: [Source\(s\)](#)

St. Charles County Government